

# Horticulture Hints

December 2009

## Updating the landscape... Plan now!

Are you thinking of updating your landscape? Start planning now, and get a jump start next spring on the installation.

Here are some reasons to update your landscape. Maybe it is overgrown, or you would like more evergreens or more color. Maybe you just don't want to do as much maintenance.

If you can't think of another decent reason, it would increase the value of your home. In most instances, improving your landscape will increase the value of your home 6-7 %, but it can be as much as 12%.

For example, if you have a \$200,000 home, a 7% increase would add \$14,000 to the sale of your home. You don't have to have a math degree for that to sound like a pretty good investment!

To begin, divide the yard into zones instead of trying to conquer the entire yard at one time.

Take the front yard first, and then maybe the sides, and you may want to divide the back yard into smaller sections. This will make the task less daunting, and it doesn't have to be done all in one season.

Next, evaluate what you have and whether or not you want to keep, move, or just get rid of the plants. If you want to keep the plant material, be certain it is healthy and not overgrown, or it can be trimmed back to an acceptable size.

Please don't get over-sentimental and try to keep it all. The point is to update the landscape, not keep it all the same!

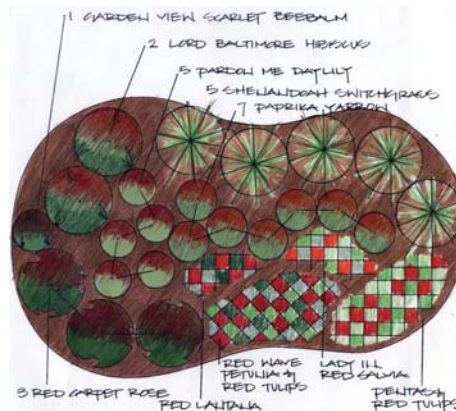
Hardscapes also need to be assessed. This includes patios, sidewalks, walls and fences. You may not need some of these structures anymore, or you may simply need to update them.

For example, if you have an old railroad tie wall, it could be replaced with tumbled Versa Lok for an update look.

The most important step now is to have a plan and a budget. Purchasing plants just because you like the way they look at a garden store doesn't work.

Bring a 5 x 7" picture, including measure-

ments, to our Garden Store, and we can draw a sketch that will suit your home and help you pick out the plants you need.



Or, you can have one of our Landscape Designers come to your home and give you a full landscape design with an estimate to have us do the installation.

So don't just think this winter about remodeling the inside of the house, update the outside at well. If you plan now, you can get to work building and planting early next spring! ❄️

### What to do in December

- Our container plants have been moved into polyhouses to protect fragile root systems in pots from cold temperatures. However, it is NOT too late to plant trees and shrubs! The warmth from the earth's soil is protection enough.
- Apply fertilome Winterizer to cool season grasses
- Mulch roses
- Wrap young trees to protect from rabbits
- Pick out a cut or living Christmas tree
- Decorate with fresh wreaths and boughs
- Brighten your table with poinsettias
- HAVE A SAFE AND HAPPY HOLIDAY SEASON!



# Nancy's Notebook

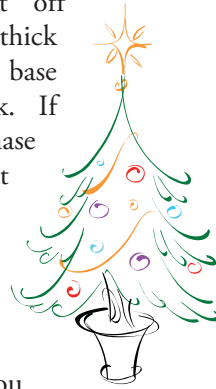
## Christmas tree care

Nothing smells more like the holidays than a fresh-cut Christmas tree in the house!

This year at the Garden Store, we have a great selection of cut Frazier Firs, Balsam Firs and Scotch pines.

I thought I would give a few tips on keeping your tree looking great through the holiday season.

First, cut off at least a ½" thick disk from the base of the trunk. If you purchase your tree at Blueville's Garden Store, we will already have covered this step for you.



Place your tree in water as soon as possible. Even better, have your stand set up at home before shopping for your perfect tree.

Be sure the tree you select will fit in your stand; cutting the sides of the trunk to fit the stand hin-

ders the uptake of water. The outside layers of the wood are the most efficient in taking up water.

You will need to provide a quart of water for every inch diameter of your tree's base.

Don't forget to periodically refill your stand with fresh water!

**IMPORTANT:** Situate your tree away from heat sources such as a fireplace or a heat vent.

You may consider lowering the temperature in the house during the day, as keeping it cooler will prolong the life of your tree.

Also, miniature lights produce little heat and prevent premature drying.

Remove your tree from the house when it gets too dry.

For easy removal, pick up a tree removal bag with your tree.

Place the bag under the tree skirt when you set up the tree. This will help keep those needles from scattering all over the floor on its way out.

I hope that everyone has a wonderful holiday season, and I want to thank everyone for making our year the best possible. Best wishes to everyone for a happy and prosperous New Year! ❄️

*Holiday Open House*  
SATURDAY, DECEMBER 5; 8AM-5PM  
UNIQUE GIFT IDEAS FOR BACKYARD LIVING

*Your Home for the Holidays*

PRESENTATION AT 10AM

BE INSPIRED TO INCORPORATE FRESH GREENS  
TO TRANSFORM YOUR HOME THIS SEASON.

EXAMPLES FOR EVERY TYPE OF HOME AND EVERY SIZE BUDGET.

CALL OR STOP BY TO SIGN UP FOR THIS SPECIAL EVENT.

